

# WAY GROUP: LOGISTICS FOR YOUR PERFORMANCE



**WAY GROUP**

**8 800 600-04-30**  
**wayg.ru**

# WAY SYSTEM

We united into a group of companies to expand and strengthen our capacities

 **WAY GROUP**

---

shipping logistics

---

Shipping and logistics company dealing with any commercial cargo shipping regardless of scale and geography

 **WAY PORT**

---

sea logistics

---

Navigation company organizing cargo shipping by sea and multimodal transportation for unique projects

 **WAY TRADE**

---

Import of goods

---

Shipping and logistics company offering a full range of Asian goods import services, from supplier search to customs clearance and certification

# WAY GROUP IN NUMBERS

**2001**

on the market since 2001

**2 000**

active customers

**82 000**

containers shipped in 2023

**4 800 000**

tons of cargo shipped by  
railway cars in 2023

**20 000**

tons of LTL shipped in 2023

**1 400**

units of road-building  
machinery shipped by sea

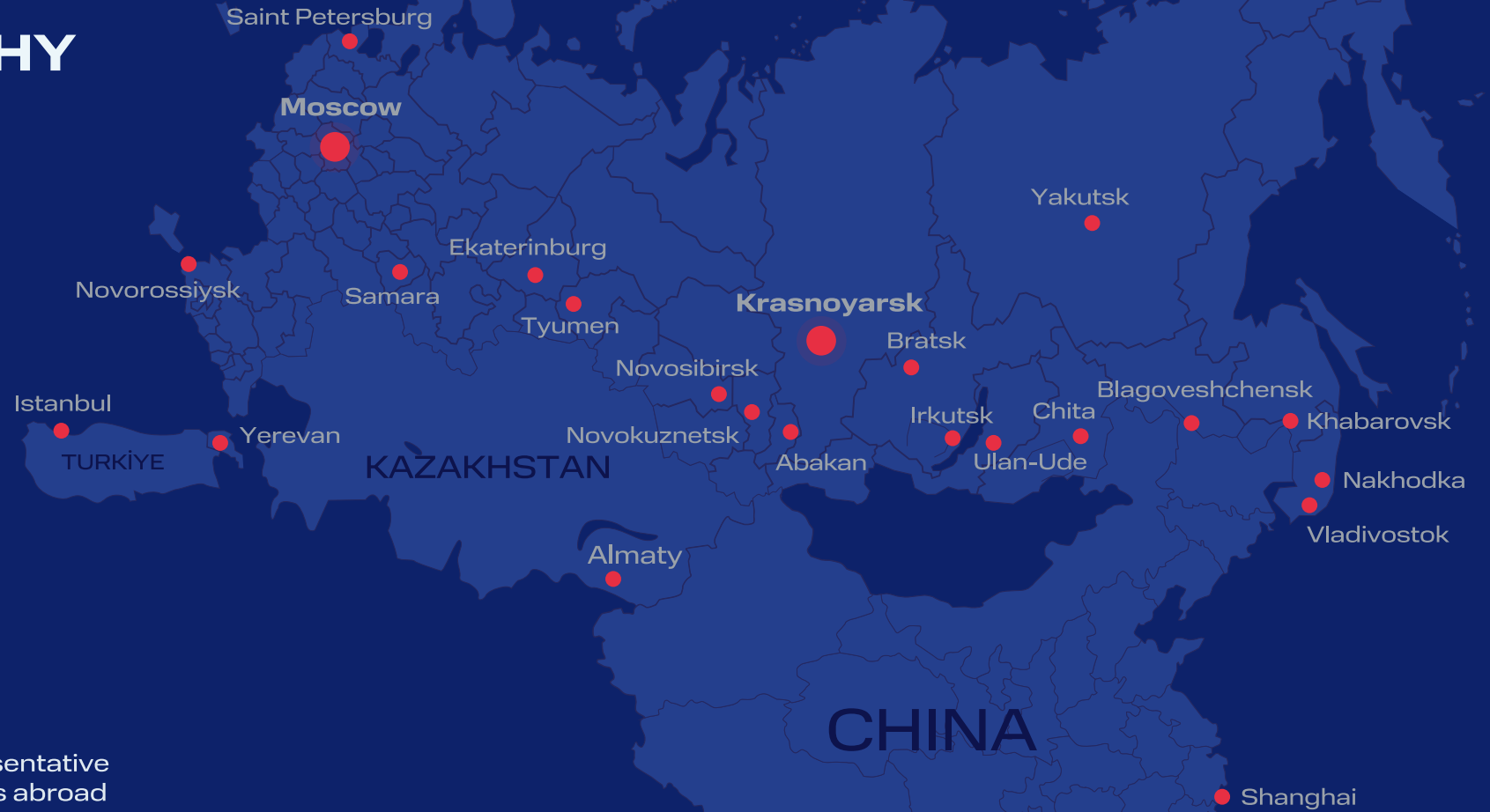
**1 500**

units of road-building  
machinery shipped by railway

**2 500**

units of road-building  
machinery shipped by trucks

# COMPANY GEOGRAPHY



**19**

cities of  
Russia

**4**

representative  
offices abroad

# CARGO TRANSPORTATION

## SHIPPING BY RAILWAY

---

контейнерные  
вагонные  
опасные

## SHIPPING BY TRUCK

---

сборные грузы (LTL)  
полная загрузка (FTL)  
с соблюдением t° режима

## SHIPPING BY SEA / BY RIVER

---

контейнерные (FCL/LCL)  
опасные  
RO-RO (паромные)  
балкерные

## SHIPPING BY AIR

---

domestic international

## OFF-SIZE AND PROJECT CARGO SHIPPING

---

by railway  
by truck  
by sea and by river

## LESS THAN CONTAINER LOAD SHIPPING

---

by railway  
by truck  
by air

# INDUSTRY- FOCUSED SOLUTIONS

For 23 years, we have been offering logistic solutions on a turn-key basis to businesses and enterprises to make your life easier. We provide standard solutions and develop customized ones to cater to the specificity of the industry.

---

**1** AUTOMOTIVE INDUSTRY

---

**2** AGROINDUSTRIAL COMPLEX

---

**3** MINERAL MINING

---

**4** ROAD-BUILDING INDUSTRY

---

**5** FOREST INDUSTRY

---

**6** CONSUMER GOODS INDUSTRY

---

---

**7** OIL AND GAS SECTOR

---

**8** FOOD INDUSTRY

---

**9** RETAIL TRADE

---

**10** THEATRE ART AND  
PERFORMANCE TOURING

---

**11** CHEMICAL INDUSTRY

---

**12** METALLURGY

---

# PARALLEL IMPORT

We deal with importing original goods from overseas via Armenia and Turkey, shipping cargo by land, by air, and by sea. LTL cargo organization available.

---

**1** AUTOMOBILES, SPARE PARTS, ACCESSORIES

---

**2** SPECIAL VEHICLES

---

**3** MEDICAL EQUIPMENT AND ACCESSORIES

---

**4** MEDICAL EQUIPMENT AND ACCESSORIES

---

**5** AGRICULTURAL MACHINERY

---

**6** OFFICE AND HOUSEHOLD APPLIANCES

---

**7** INDUSTRIAL EQUIPMENT

---

**8** FOOD EQUIPMENT

---

**9** FOOD EQUIPMENT

---

**10** ELECTRONICS

---

# IMPORT AND EXPORT DOMESTIC SHIPMENT

**Russia\*** → Domestic shipment, Southeast Asia, Soviet Central Asia, West Asia, Middle East

---

**Kazakhstan** → Worldwide

---

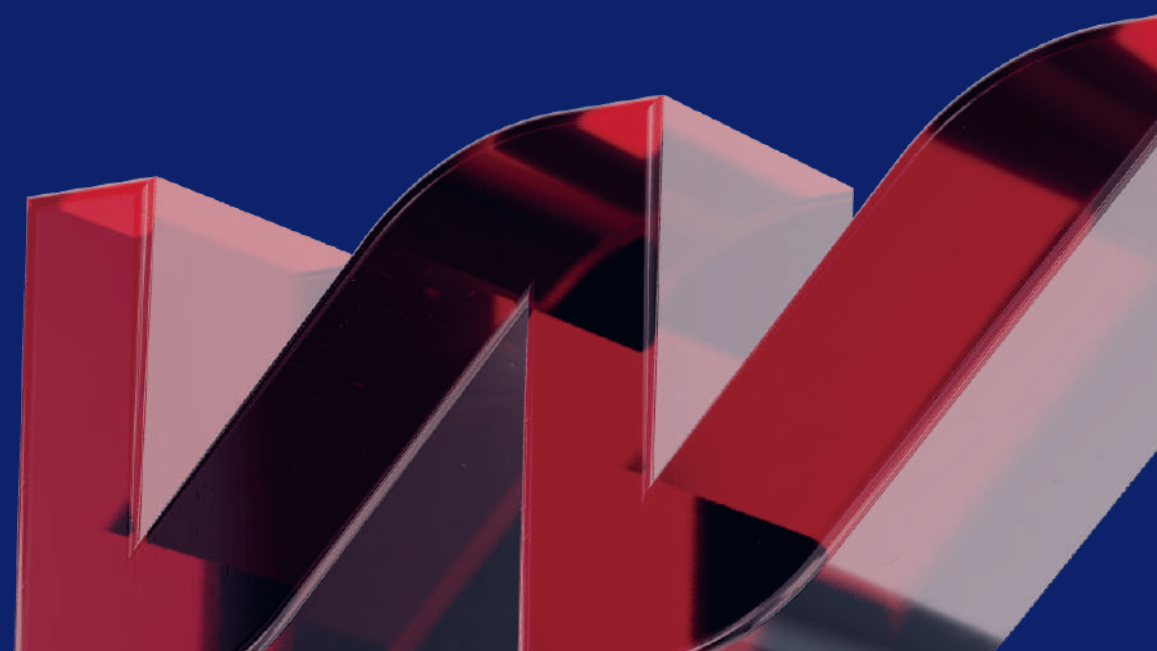
**China** → Worldwide

---

**Armenia** → Worldwide

---

\* To all “friendly” countries





# RAILWAY SHIPMENT

We can use any types of rolling stock including specialized ones. Open railway cars and accelerated container trains available. All requests and capacities of our customers are taken into account.

---

**CONTAINERS**

---

**RAILWAY CARS**

---

**UNIVERSAL PLATFORMS**

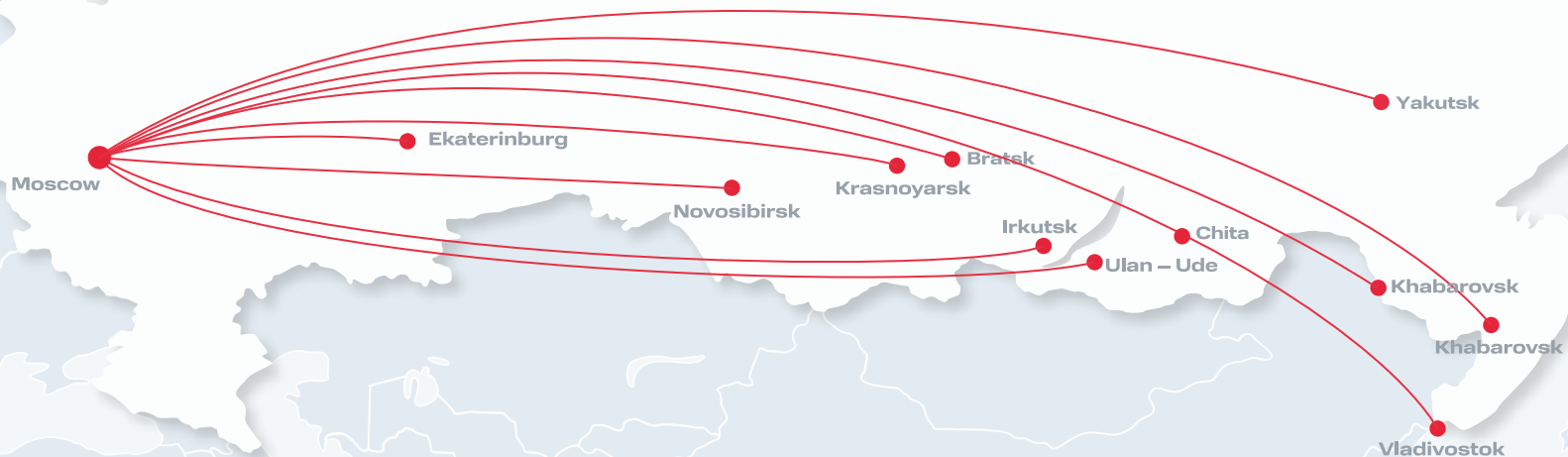
---



# REGULAR DOMESTIC CONTAINER TRAINS

Moscow – Blagoveshchensk, 9 days  
Moscow – Bratsk, 6 days  
Moscow – Vladivostok, 12 days  
Moscow – Ekaterinburg, 2,5 days  
Moscow – Irkutsk, 6 days  
Moscow – Krasnoyarsk, 5 days

Moscow – Novosibirsk, 4 days  
Moscow – Ulan-Ude, 7 days  
Moscow – Khabarovsk, 11 days  
Moscow – Chita, 7 days  
Moscow – Yakutsk, 9 days



# INTERNATIONAL CONTAINER RAILWAY SHIPPING

Export by container trains to **China, India, Uzbekistan, Kyrgyzstan, Bangladesh,** and other countries\*. Arrangement of regular routes via border crossing points of **China, Mongolia, and Kazakhstan.**



\*to all Russia-friendly countries

# RAILWAY SHIPPING TO ANY DESTINATION IN RUSSIA

Delivery and lease of closed open  
railway cars on a campaign or per day basis.



# SHIPMENT BY TRUCK

Shipment by truck. Proprietary and leased vehicle fleet. LTL and FTL shipment available. Available vehicles: low loaders, tank cars, tent-covered trailers, car haulers, unimogs, refrigerators.



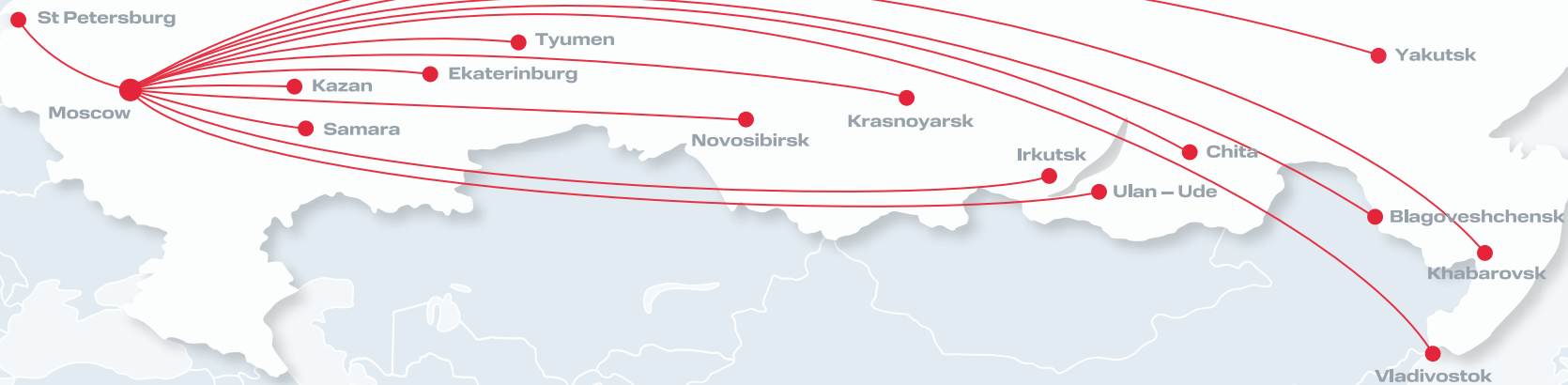
LESS THAN CONTAINER LOAD (LTL)

FULL LOAD (FTL)

# DOMESTIC SHIPPING BY TRUCK

Moscow – Blagoveshchensk, 12 days  
Moscow – Vladivostok, 14 days  
Moscow – Ekaterinburg, 3 days  
Moscow – Irkutsk, 8 days  
Moscow – Kazan, 2 days  
Moscow – Krasnoyarsk, 6 days  
Moscow – Novosibirsk, 5 days

Moscow – Samara, 4 – 6 days  
Moscow – St Petersburg, 2 days  
Moscow – Tyumen, 4 days  
Moscow – Ulan – Ude, 9 days  
Moscow – Khabarovsk, 13 days  
Moscow – Chita, 10 days  
Moscow – Yakutsk, 14 days



# SHIPPING BY TRUCK TO ASIAN DESTINATIONS

## WEST ASIA

- Moscow – Ankara, 7-9 days
- Moscow – Antalya, 8-10 days
- Moscow – Baku, 5-7 days
- Moscow – Yerevan, 5-7 days
- Moscow – Istanbul, 8-10 days
- Moscow – Tbilisi, 5-7 days
- Moscow – Tehran, 7-10 days

## MIDDLE ASIA

- Moscow – Almaty, 7-9 days
- Moscow – Astana, 5-7 days
- Moscow – Tashkent, 5-7 days

## EAST ASIA

- Moscow – Ulaanbaatar, 10-12 days



# SHIPPING BY SEA AND BY RIVER

Arrangement of shipping by sea and by river, including LTL, containers, bulk, oversize and other types of cargo from major ports.

---

**CONTAINER LOAD (FCLZLCL)**

---

**RO-RO (FERRY)**

---

**BULK CARGO**

---





# ANY DIFFICULTY LEVEL SHIPPING BY SEA AND RIVER

## INDIA

Nhava-Sheva – Bandar Abbas –  
Astrakhan/Makhachkala, 25-30 days  
Nhava-Sheva – Vladivostok/Nakhodka, 20-22 days  
Nhava-Sheva – Novorossiysk, 30 days

## VIETNAM

Haiphong – Vladivostok, 4 days  
Haiphong – Nakhodka, 14 days  
Ho Chi Minh City – Vladivostok, 10 days  
Ho Chi Minh City – Nakhodka, 10 days

## IRAN

Bandar Abbas – Astrakhan/  
Makhachkala, 8-9 days  
Bandar-e Anzali – Astrakhan/  
Makhachkala, 5-7 days

## KOREA

Busan – Vladivostok/  
Nakhodka, 2 days

## TURKIYE

Istanbul/Gebze/Izmir/Mersin –  
Novorossiysk, 4-5 days



# ANY DIFFICULTY LEVEL SHIPPING BY RIVER AND BY SEA

## CHINA

- Qingdao/Shanghai/Ningbo – Vladivostok/Nakhodka, 5-7 days
- Shekou/Guangzhou – Vladivostok/Nakhodka, 12-14 days
- Shanghai/Ningbo/Shekou – Novorossiysk, 35-40 days
- Shanghai/Qingdao/Ningbo/Dalian/Xingang – Tongjiang – Khabarovsk, 10-15 days
- Shanghai/Qingdao – Bandar Abbas – Yerevan, 35-40 days
- Shanghai – Qingdao – Poti – Yerevan, 35-40 days

## UAE

- Jebel Ali – Bandar Abbas – Bandar-e Anzali – Astrakhan/Makhachkala, 20-25 days



\*Travel time does not include transshipment port waiting time and customs clearance

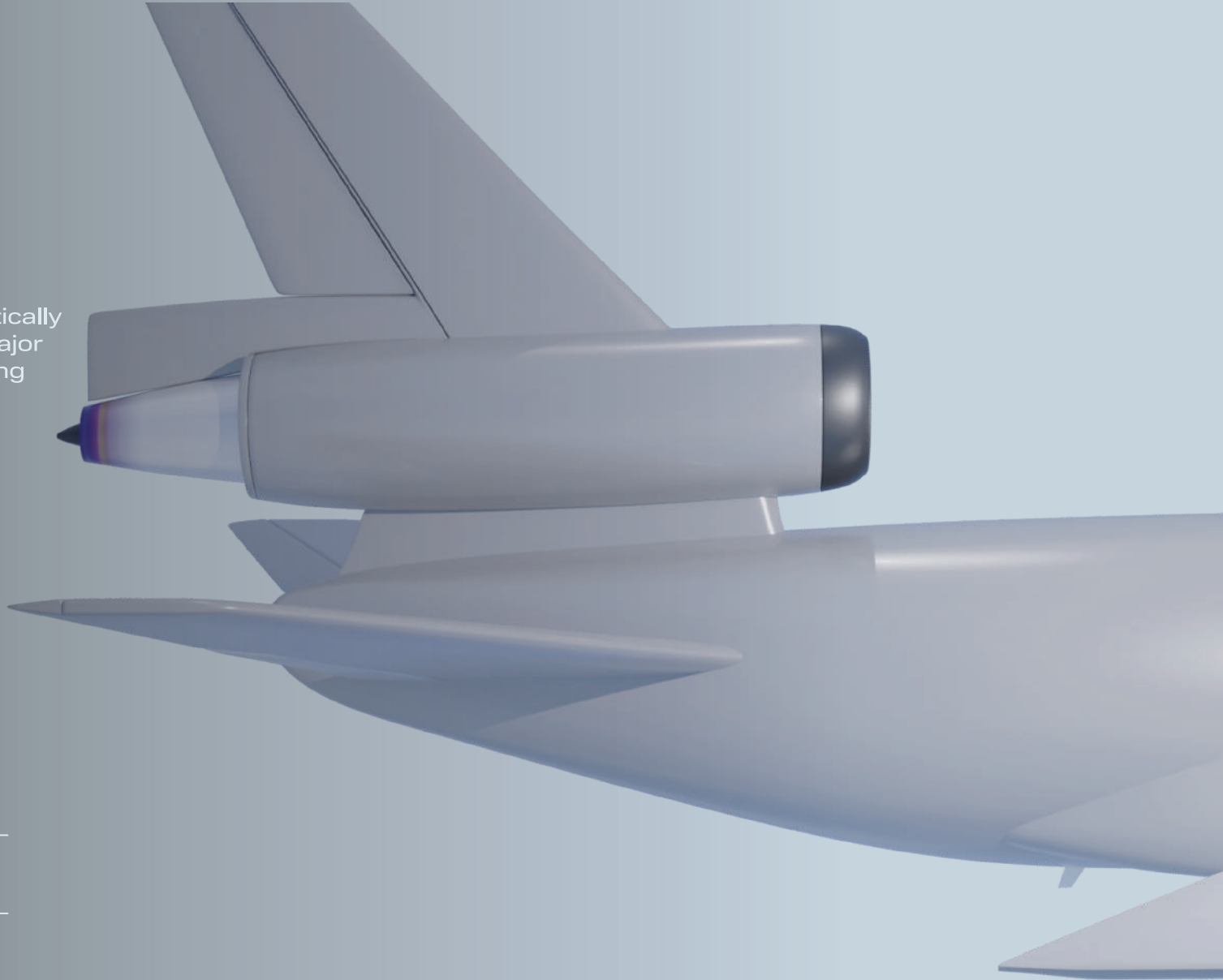
# SHIPPING BY AIR

We ship any breakbulk cargo by air domestically and internationally, cooperating with the major air companies of Russia and China, providing assistance in customs clearance. Please inquire for information on allowed sizes and weights.

---

**FOR LEGAL ENTITIES ONLY**

---



# SHIPPING BY AIR

## RUSSIA

Moscow – Blagoveshchensk  
Moscow – Vladivostok  
Moscow – Ekaterinburg  
Moscow – Irkutsk  
Moscow – Kazan  
Moscow – Krasnoyarsk

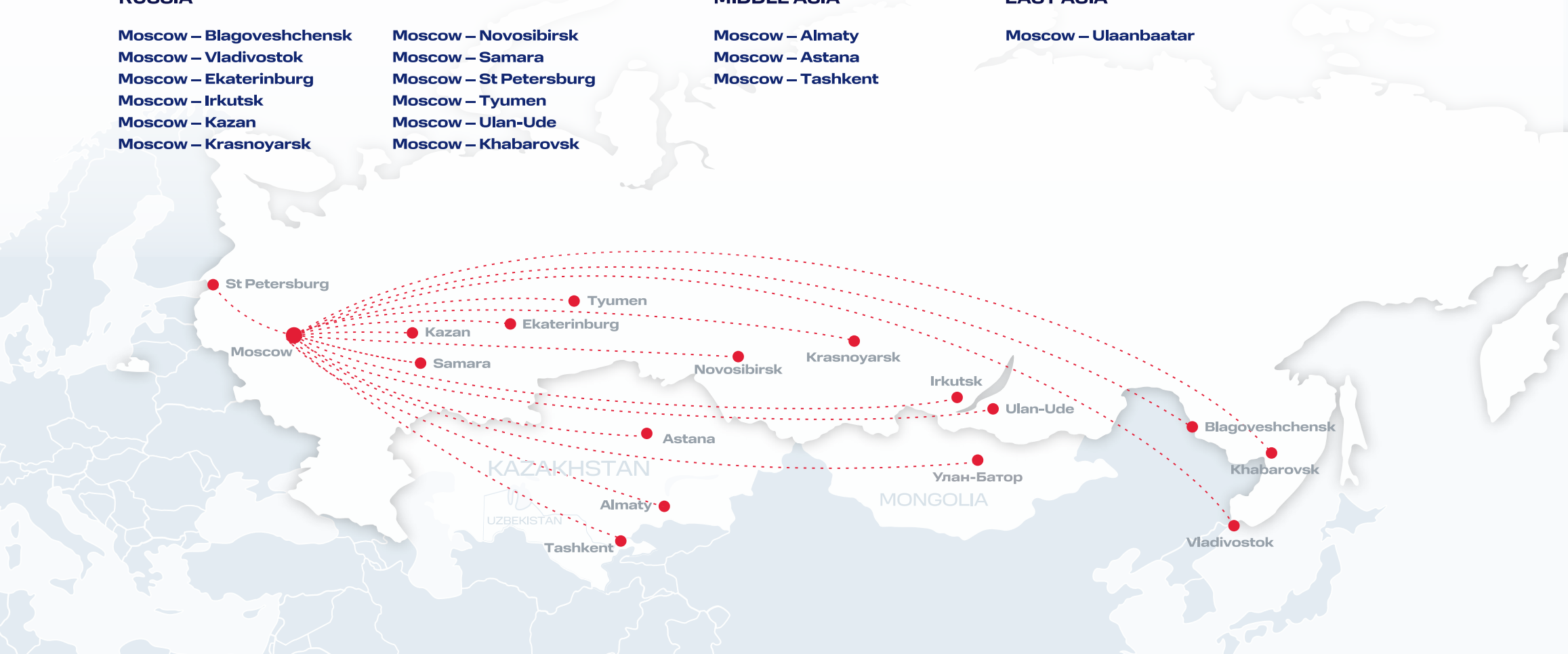
Moscow – Novosibirsk  
Moscow – Samara  
Moscow – St Petersburg  
Moscow – Tyumen  
Moscow – Ulan-Ude  
Moscow – Khabarovsk

## MIDDLE ASIA

Moscow – Almaty  
Moscow – Astana  
Moscow – Tashkent

## EAST ASIA

Moscow – Ulaanbaatar



# SHIPPING BY AIR

## WEST ASIA

- Moscow — Ankara
- Moscow — Antalya
- Moscow — Baku
- Moscow — Yerevan
- Moscow — Istanbul
- Moscow — Tbilisi
- Moscow — Tehran

## WEST ASIA

- Moscow — Beijing
- Moscow — Qingdao
- Moscow — Shanghai
- Moscow — Hanoi
- Moscow — Manila
- Moscow — Bangkok
- Moscow — Kuala Lumpur
- Moscow — Singapore



# OFFSIZE AND PROJECT CARGO SHIPPING

Offsize cargo is shipped by railway, truck, sea, and river.

---

**BY TRUCK**

---

**BY RAILWAY**

---

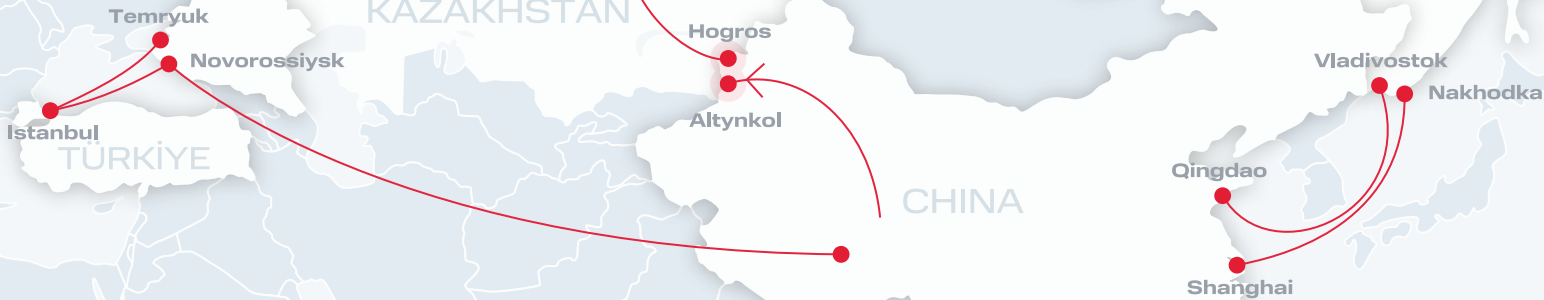
**BY SEA AND BY RIVER**

---



# OFFSIZE CARGO SHIPMENT ROUTES

- Qingdao/Shanghai – Vladivostok/Nakhodka
- Istanbul – Novorossiysk/Temryuk
- Manchuria – Zabaykalsk
- Hogros Border Crossing – Altynkol – Russia
- China – Novorossiysk
- China – St Petersburg



# RAILWAY SHIPPING TO ANY DESTINATION IN RUSSIA

Closed and open railway cars  
to let by campaigns or by per  
day basis.

Shipment to hard-to-access  
regions of Russia:

**Irkutsk Oblast,  
Krasnoyarsk Territory,  
Magadan Oblast,  
Republic of Sakha (Yakutia),  
Khabarovsk Territory,  
Khanty-Mansiysk Autonomous District,  
Yamal-Nenets Autonomous District**





# WAY GROUP TERMINALS FOR MACHINERY STORAGE

secured premises with video surveillance;

## **Krasnoyarsk terminal (Krasnoyarsk-Severny Station):**

- secured premises with video surveillance;
- separately assigned approach road;
- vehicle platforms equipped with ramps;
- loading and handling cranes.

## **Artyom terminal (Uglovaya Station):**

- secured premises with video surveillance;
- separately assigned approach road;
- vehicle platforms equipped with ramps;
- mobile metal loading/unloading platform.

## **Zabaykalsk terminal:**

- secured premises with video surveillance;
- separately assigned approach road;
- vehicle platforms equipped with ramps;
- loading and handling cranes.

## **Borzya terminal:**

- secured premises with video surveillance;
- separately assigned approach road;
- vehicle platforms equipped with ramps;
- loading and unloading cranes.

**Krasnoyarsk**



**Borzya**



**Zabaykalsk**



**Artyom**



# PARALLEL I MPORT

Import of original goods via Armenia and Türkiye by trucks, by air, as well as by sea. Less-than-container-load shipment available.

---

FOR LEGAL AND PHYSICAL ENTITIES

---



# TRANSPORT CORRIDOR TO RUSSIA VIA TÜRKİYE

## BY LAND

Türkiye (Sarpi) –  
Georgia (Hopa/Dariali) –  
Vladikavkaz (Verkhniy Lars) –  
Moscow

## BY AIR

Türkiye (Istanbul IST/Ankara ESB / Izmir ADB/Adana ADA) –  
Moscow (SVO1/SVO2/DME)

## BY SEA

Türkiye (Sarpi) –  
Georgia (Hopa/ Dariali) –  
Vladikavkaz (Verkhniy Lars) –  
Moscow



# TRANSPORT CORRIDOR TO RUSSIA VIA ARMENIA

## BY LAND

Armenia (Bavra) —  
Georgia (Nanotsminda/Dariali) —  
Vladikavkaz (Verkhniy Lars) —  
Moscow

## BY AIR

Armenia (Gyumri LWN/Yerevan EVN) —  
Moscow (SVO1/SVO2/DME)

## BY SEA + LAND

Armenia (Agarak/Norduz) —  
Iran (Anzali/Nowshahr/Amirabad) —  
Russia (Makhachkala/Olya/Astrakhan)



# LESS THAN CONTAINER LOAD

Less-than container-load shipment worldwide.  
We delivery cargo of all sizes and types from any  
customers shipped in the same direction.  
The shipment cost depends on the quantity and  
weight of the cargo.

---

**BY TRUCK**

---

**BY RAILWAY**

---

**BY SEA**

---

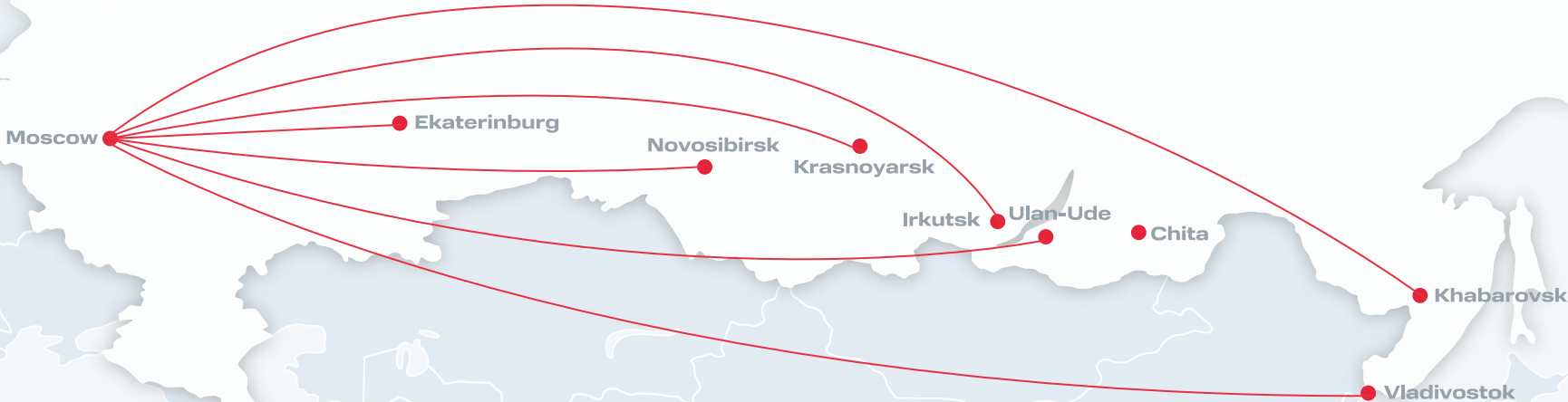
**BY AIR**

---



# CONVENIENT ROUTE SELECTION

From Moscow to Ekaterinburg, Novosibirsk, Krasnoyarsk, Irkutsk, Ulan-Ude, Khabarovsk, Vladivostok.



# SAFE STORAGE



## MOSCOW

Egoryevskoe Vladenie St.,  
No. 7, building 7  
Floor area 1000 sq m.

Secured premises with 24/7  
surveillance. Close to the main roads.



## ULAN-UDE

Bograda St., 73a.  
Floor area 2000 sq m.

Secured premises with 24/7  
surveillance. 24/7 secured  
truck park.



## PODOLSK

Vishnevaya St., 11,  
Floor area 250 sq m.

Secured premises with  
24/7 surveillance.



## CHITA

Geodezicheskaya St., 50.

Secured premises with  
24/7 surveillance + 2  
temperature-controlled  
facilities (for frozen  
goods storage).



## KRASNOYARSK

Yastynskaya St., 47B/4, warehouse 13.

Secured premises with 24/7  
surveillance, temperature-controlled  
long-term storage facility.

# BRANCH ADDRESSES



📍 **Moscow** | 101000 Myasnitskaya St., No. 35, building 2, floor 9

---

📍 **Abakan** | 655017 Svobody St., No. 8, office 46

---

📍 **Blagoveshchensk** | 675600 50 Let Oktyabrya St., No. 108/2, office 208

---

📍 **Bratsk** | 665717 Yuzhnaya St., No. 8, office 216

---

📍 **Vladivostok** | 690034 Goriyskaya St., No. 15, floor 6

---

📍 **Ekaterinburg** | 620028 Belinskogo St., No. 83, floor 18, office 1814

---

📍 **Irkutsk** | 664047 Karla Libknekhta St., No. 125, floor 2

---

📍 **Krasnoyarsk** | 660125 Shumyatskogo St., No. 10, floors 2-3

---

📍 **Novokuznetsk** | 654000 Metallurgov St., No. 20, office 419

---

📍 **Nakhodka** | 692941 Vrangel-1 settlement, Vnutriportovaya St., No. 19, office 6

---

📍 **Novorossiysk** | 353900 Gubernskogo St., No. 25, office 307

---

📍 **Novosibirsk** | 630004 Komsomolskiy Av., 13/1, office 507

---

📍 **Samara** | 443086 Sklyarenko St., No. 26, office 7012, Panorama Centre

---

📍 **Saint Petersburg** | 196191 Konstitutsii Sq., No. 1, block 2

---

📍 **Tyumen** | 625013 Permyakova St., No. 1, office 501/1

---

📍 **Ulan-Ude** | 670000 Borsoeva St., No. 13/2, floor 3

---

📍 **Khabarovsk** | 680045 Volochaevskaya St., No. 8, office 8

---

📍 **Chita** | 672000 Babushkina St., No. 104, office 426

---

📍 **Yakutsk** | 677000 Dzerzhinskogo St., No. 27/1, floor 2

---

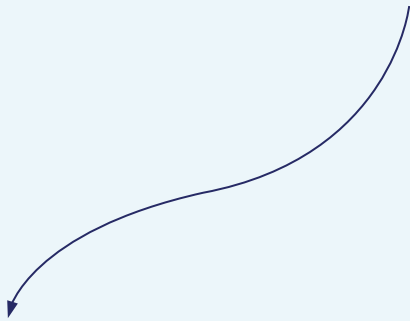
📍 **Almaty** | 050046 Mynbaeva St., floor 9, office 127

---





## Contact us for best solutions



[info@wayg.ru](mailto:info@wayg.ru)

[www.wayg.ru](http://www.wayg.ru)

+7 (800) 600-04-30

Head office: Krasnoyarsk, Shumyatskogo St., No. 10 , floors 2-3